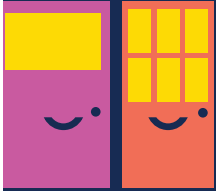
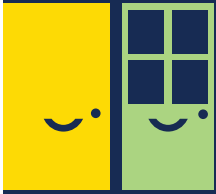
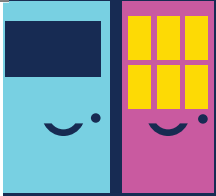


Compassionate Neighbours

in North Hertfordshire, Stevenage
& surrounding villages



Compassionate
Neighbours

in North Hertfordshire, Stevenage
& surrounding villages



Would you like a Compassionate Neighbour?

Compassionate Neighbours are trained volunteers offering friendship and a listening ear to people living in their community. Compassionate Neighbours will visit you weekly and take you out if you wish, or just stay in and have a cup of tea and a chat.

There is no charge.

Could you be a Compassionate Neighbour?

Full training and support is provided throughout your time with us.

Find out if Compassionate Neighbours is for you!

Please contact the Compassionate Neighbours Team
at Garden House Hospice Care:

Tel: 01462 679540 **email:** cn@ghhospicecare.org.uk

Registered Charity No.: 295257

Compassionate
Neighbours



COMMUNITY
FUND

settle.

