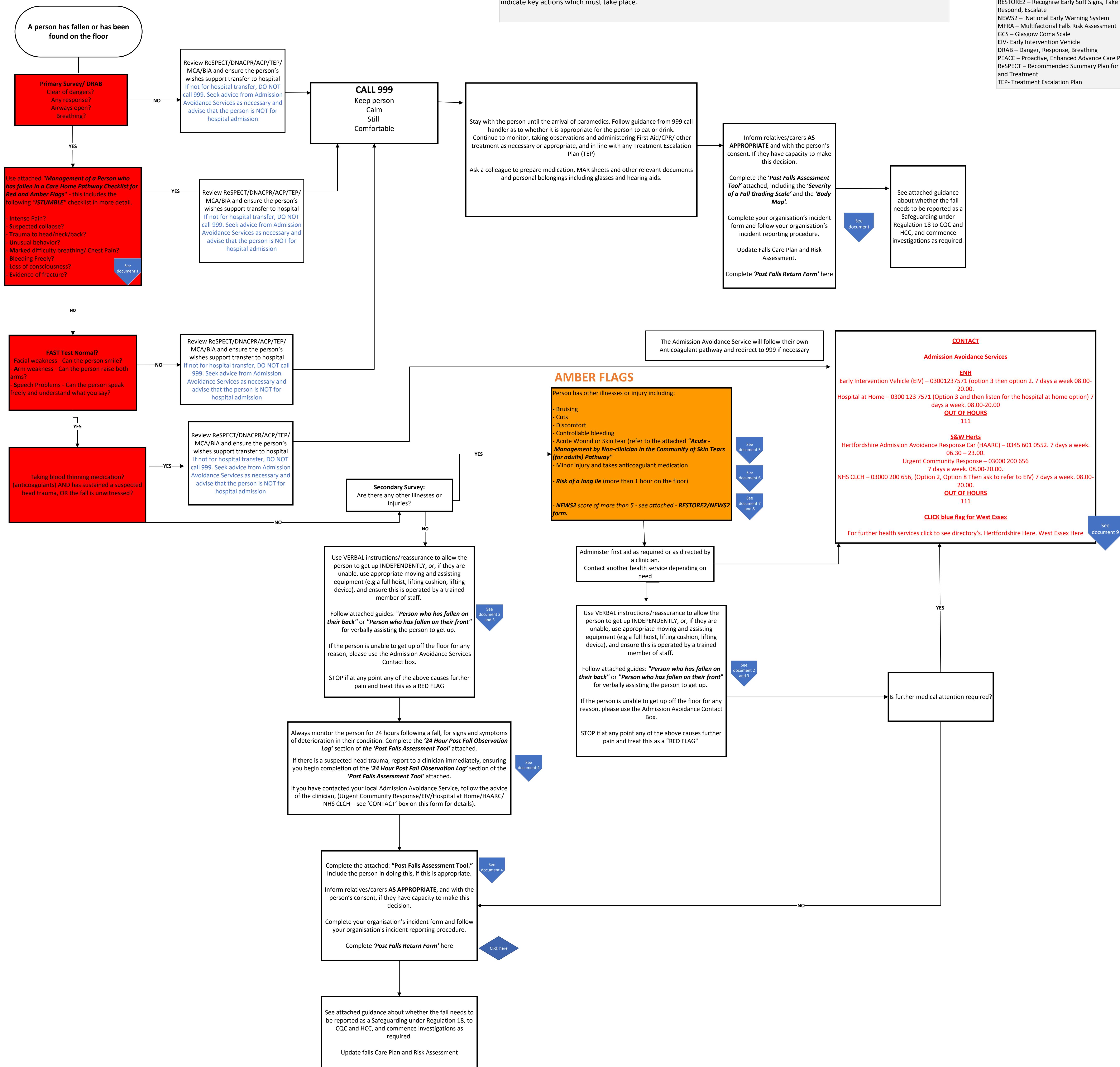


# Management of a Person Who Has Fallen Care Home Pathway

It is suggested to use this alongside the "ISTUMBLE" App



RED FLAGS



## Overview

This pathway provides an overview of the steps which should be taken to safely manage a Fall in a persons own home when they are being supported by a Homecare provider. The pathway should be used in conjunction with the "Management of a Person who has Fallen Care Home Pathway Checklist for Red and Amber Flags" or "ISTUMBLE" app.

**Red Flags:** Immediate call to 999 and administer first aid  
**Amber Flags:** Administer first aid and consider call to Admission Avoidance Services

As per the pathway, an assessment should be carried out after every fall using the "Post Falls Assessment Tool". Red and Amber Flags indicate key actions which must take place.

Glossary	
HCC	- Hertfordshire County Council
CQC	- Care Quality Commission
MAR Sheet	- Medical Administration Record Sheet
ADRT	- Advanced Decision to Refuse Treatment
DNACPR	- Do Not Attempt CPR
LPA	- Lasting Power of Attorney
ACP	- Advanced Care Plan
HAARC	- Hertfordshire Admission Avoidance Response Car
MCA	- Mental Capacity Act
BIA	- Best Interest Assessment
SWH	- South West Herts
ENH	- East North Herts
Neuro Obs	- Neurological Observations
RESTORE2	- Recognise Early Soft Signs, Take Observations, Respond, Escalate
NEWS2	- National Early Warning System
MFRA	- Multifactorial Falls Risk Assessment
GCS	- Glasgow Coma Scale
EIV	- Early Intervention Vehicle
DRAB	- Danger, Response, Breathing
PEACE	- Proactive, Enhanced Advance Care Plan
ReSPECT	- Recommended Summary Plan for Emergency Care and Treatment
TEP	- Treatment Escalation Plan



# Prevention & Enablement

## Supporting documents

1. [Management of Person who has Fallen in Care Home Pathway Checklist for Red Flags](#)
2. [What to do when a person has fallen on their back](#)
3. [What to do when a person has fallen on their front](#)
4. [Post Falls Assessment Tool](#)
5. [Acute Management by Non-Clinician in the Community of Skin Tears \(for Adults\)](#)
6. [Complications of Long Lie](#)
7. [NEWS2 Score Chart](#)
8. [RESTORE2-Chart](#)
9. [West Essex Contact Information Additional](#)

## Additional supporting documents

- [Glasgow Coma Scale \(GCS\)](#)
- [Multifactorial Falls Risk Assessment Form](#)