



Fire Safety Study Session (Supported Living Services)



Specialised Housing

Creating a cleaner, greener, healthier Hertfordshire



WELCOME

- Housekeeping
- Introductions



WC



LEGISLATION

What piece of legislation is used in the UK to ensure fire safety in Specialised Housing?

- The Regulatory Reform (Fire Safety) Order 2005

What does 'The Order' require from you?

As the responsible person you must:

- carry out a fire risk assessment of the premises and review it regularly
- tell staff or their representatives about the risks you've identified
- put in place, and maintain, appropriate fire safety measures
- plan for an emergency
- provide staff information, fire safety instruction and training

The Fire Safety Order is a risk-based approach



- Fire Safety in Specialised Housing guide
- BS 9991:2015 – Fire safety in the design, management and use of residential buildings – Code of practice
- DCLG guide – Fire safety risk assessment, Sleeping accommodation
- Fire safety in purpose-built blocks of flats



FIRE RISK ASSESSMENT

“If you are the *‘Responsible Person’*, you must ensure that a fire risk assessment has been carried out that must focus on the safety of all *‘Relevant Persons’* in the case of fire.

It should pay particular attention to those at special risk, such as the disabled and those with special needs”



PERSON CENTRED RISK ASSESSMENT

The person-centred fire risk assessment will help identify residents who are at higher risk from fire in their own accommodation – whether this is due to their behaviours or their ability to respond and escape from a fire.

The risk assessment should include an action plan that specifies what steps will be taken to improve the safety of the vulnerable resident.



PERSON CENTRED RISK ASSESSMENT

- Step 1: The characteristics, behaviours and capabilities of the resident that may lead to fire risk.
- Step 2: Determine the potential causes of fire and the existing measures to prevent fire.
- Step 3: Identify any circumstances that could lead to the rapid development of fire.
- Step 4: Identify existing measures to protect the resident if fire occurs.
- Step 5: Consider capacity of resident to respond appropriately to fire alarm signals or signs of fire.
- Step 6: Consider ability of resident to make their way to safety.
- Step 7: Determine the level of risk to the resident from fire.
- Step 8: Prepare action plan.
- Step 9: Determine period for review of the assessment.



PEEPs vs PCFRA

- The PCFRA is the assessment process to identify risks and the specific needs of the resident. This is bespoke to each resident.
- The PEEP is a tailored document detailing how the resident will evacuate.
- These 2 documents work hand in hand.



FIRE ALARMS

- Fire alarms should be present in the common areas
- Fire alarms in the flats



EMERGENCY LIGHTING

- Where do you find emergency lighting?
- Illuminate the means of escape
- How long does the emergency lighting in your building last for?



FIRE FIGHTING MEDIA

- Do you have extinguishers in your building?
- What types of extinguishers do you have in your building?
- Are the extinguishers relevant to the risk?



TESTING & MAINTENANCE

Fire Safety Testing Programme

	Weekly	Monthly	6 Monthly	Annually
Fire Alarm & Detection	Test		Service	Full Service
Emergency Lighting	Check	Test	Service	Full Service
Firefighting Equipment	Check			Full Service
Fire Doors	Check			



STAFF TRAINING

- I-Learn
- Tabletop exercises
- Q&A in team meetings







Creating a cleaner, greener, healthier Hertfordshire



Creating a cleaner, greener, healthier Hertfordshire



EVACUATION

- Stay put in the flats
- Simultaneous evacuation in the common areas
- Do you have any people that require assistance to evacuate?



MANAGEMENT OF CONTRACTORS

- Do you have a sign in and sign out process?
- Have the contractors left the compartmentation in a suitable state?



DAY TO DAY LIFE

- Lithium-ion batteries
- Scooters
- Electric vehicles



CONTACT US

- 01707 292310
- Administration.cfs@hertfordshire.gov.uk
- Give full address when making contact





Creating a cleaner, greener,
healthier Hertfordshire

Home Fire Safety

For Professionals

Hertfordshire Fire and Rescue Service.
save.

Working to protect. Acting to



Aims and Objectives of today's session.

- Understand the "Person-Centred" Framework and 'Homesafe 7'
- Understand why involvement from HFRS should be part of your multi agency response.
- Recognise who is at risk from fire from Fire Death report data.
- Learn the common causes of fire in the home.
- Understand the requirement for reporting, recording and referring to HFRS.

The Person-Centred Framework has been developed by the National Fire Chief's Council (NFCC) to standardise FRS's approach placing people and community at the centre of all that we do.

It has explicit aim to reduce fire risk; to do this the individual or community must be at the centre of all that we do.

HFRS adopts this into their core code of ethics, with putting communities first as one of their 5 key principles.



HFRS Home Fire Safety Visits recognises personal characteristics and that individuals may have varied and increasing fire risk based upon numerous and changing factors under the three headings:

PERSON

BEHAVIOUR

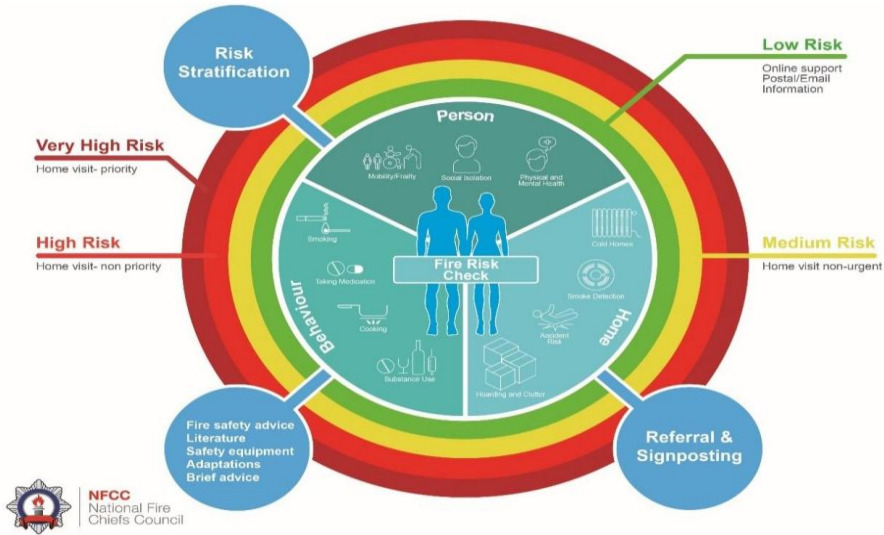
HOME

HFRS use a Community Fire Risk Management Information System (CFRMIS) to record their HFSVs, this offers personalised advice and guidance based on the answers given by the resident.

Why involve HFRS in a multi-agency response?

- Fire risk often overlaps with health needs, care issues and other safeguarding concerns.
- HFRS provides specialist advice and practical prevention measures
- Early involvement prevents serious harm, injury or death
- HFSVs are person centred, supporting people to remain safe at home
- Fire safety is a shared responsibility, strengthened through joint working

Better coordinated support means that people can receive the right help at the right time.



Eliminate **R**educe **I**solate **C**ontrol **P**PE

Who is most at risk of dying in a fire in the home?

What are the most common contributing factors to a fatal fire in the home?





30%
were aged 50-65



60%
had limited mobility



70%
lived alone



50%
were aged 65+



75%
Had one or more
disabilities

Information from Fire Death report 2020-2023



60%
used medication or
medical devices



60%
of homes where the fire was caused by smoking materials
had evidence of previous burns to themselves, clothing,
floor, or furniture



50%
of fires were
caused by
cigarettes or
smoking materials



30%
had emollient
cream present

Information from Fire Death report 2020-2023



60%

of homes were
rented through
local authority or
housing
association



80%

of homes where a
fatal fire occurred
had a smoke
detector in place



40%

had a main carer or
formal care
package in place

Information from Fire Death Report 2020-2023

70% had no previous contact with HFRS

60% had more than one professional agency contact

40% had no previous contact with any professional agencies

50% had previous safeguarding contacts made

1 fatality resulted in a Safeguarding Adults Review



Ambulance



Police



Mobility services



Drug and alcohol services



Adult care services



NHS



Mental health services

Information from Fire Death report 2020-2023

HomeSafe 7



1. Home Fire Detection and Assistive Technology
2. General Fire Safety (Candles, Cooking, and Escape Planning)
3. Electrical Safety
4. Fires and Heaters (Safer Heating)
5. Clutter and Hoarding
6. Deliberate Fires
7. Smoking-related Fires
8. Medicines and Medical Devices

RISK LEVEL	DEFINITION	RESPONSE
VERY HIGH	Immediate and significant likelihood of harm that is almost certain to occur and the consequences are catastrophic or life threatening	4 Hours
HIGH	Likelihood of harm is significant that is likely to occur, and the consequences are severe or critical	24 Hours
MEDIUM	Likelihood of harm is possible with the potential consequences being significant but not critical	14 Days
LOW	Likelihood of harm is minimal, and the consequence is minor or easily manageable	28 Days

Common causes of fire

Smoking

Unattended cooking

Electrical/applia faults

Unsafe heater use

Unsafe use of candles

Smoking



Unattended Cooking



Electrical Faults



Unsafe heater use



Unsafe use of candles





1



2



3



4



5



6



7



8



9

How to refer to HFRS

We have a professionals Referral form that can be accessed via our external website

[Home fire safety self-check and visits | Hertfordshire County Council](#)

Or via the HCC intranet:

<https://intranet.hertfordshire.gov.uk/page/20945>

What information do we need?

- Consent from resident for HFRS to come and do a HFSV
- Your details – please include a contact number and email
- Details of the person who needs the visit, including their disability status
- What their risks are in terms of fire
- Control measures and advice given

Key Reminder

Fire risk becomes higher when these signs appear alongside other issues, such as health issue, mobility issues, cognitive impairment, hoarding or substance use

Seeing any one of these signs-or several combined – should prompt you to make a referral to HFRS for a HFSV

Need more information?

You can reach out to the Prevention Team for further information

Safeguarding - Amy Edgar: amy.edgar@hertfordshire.gov.uk

WTR - Natalie Dobson: Natalie.dobson1@hertfordshire.gov.uk

SNH – Joanna Caruana: joanna.caruana1@hertfordshire.gov.uk

DSA – Zoe Crossan: zoe.crossan@hertfordshire.gov.uk

HWH- Claire Shearman: Claire.shearman@hertfordshire.gov.uk

EHB – any of the above

Prevention Team Leader: Carley-Jo Rackley carley-jo.Rackley@hertfordshire.gov.uk



The HCPA Resource Library

Everything you need, all in one place

Available to everyone, 24/7

Includes local and national resources, tools, guidance, policies, and contacts in a wide variety of areas

Perfect tool to support your business

hcpa.info/members-zone

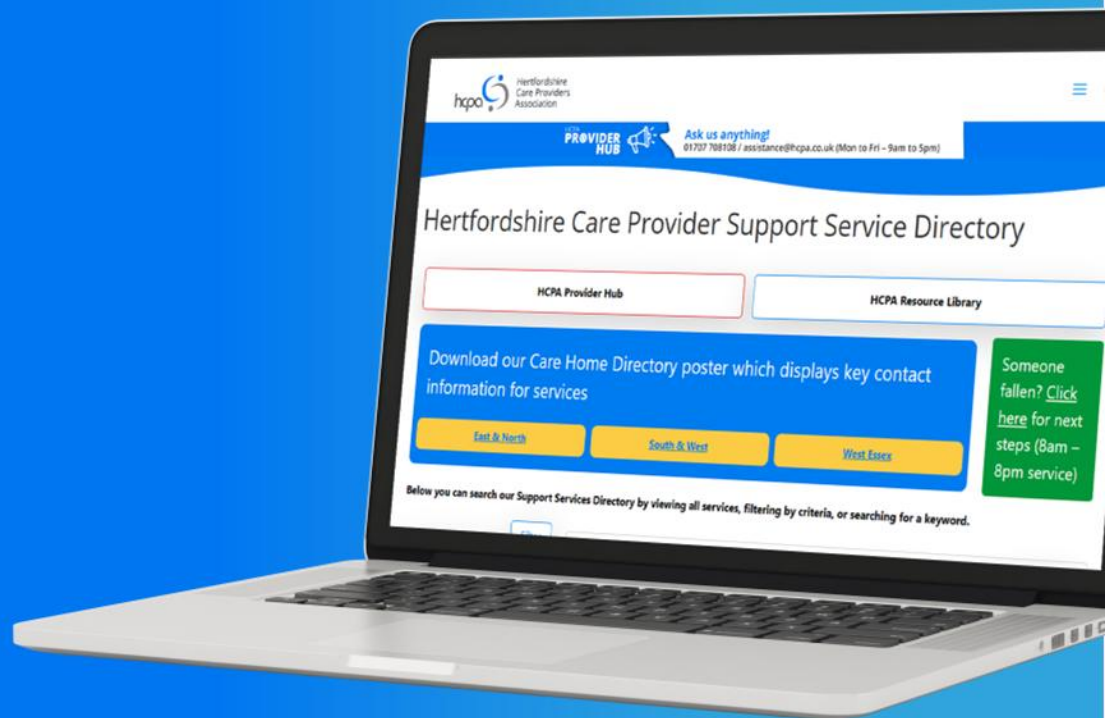


Support Service Directory

All the contacts you need, in one place

Up to date contact details for all the Hertfordshire support services you need

hcpa.info/supportservicedirectory





The Care Professional Academy

Upload your certificates, get more rewards...

Certificates will be uploaded to the Academy for you.

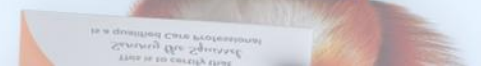
This is the only way you can access your certificates.

Keep adding to your certificates, the more certificates you add, the more points you get to move up the tiers.

Not yet signed up to the Academy?

Join here... careprofessional.co.uk

or scan the QR code





The Care Professional Academy

Enjoy discounts at all these top retailers & more...

