



Fire Safety in Residential Care Premises Workshop 6

Creating a cleaner, greener, healthier Hertfordshire



INTRODUCTION

- Housekeeping
- Introductions



WHY ARE WE HERE?

- 2023-24 – 485 Fires in care homes in England
- 2024-25 – Provisional data suggests 497 fires in care homes in England
- 2024-25 – 192 enforcement notices issued against care homes in England





Creating a cleaner, greener, healthier Hertfordshire

Legislation

What piece of legislation is used in the UK to ensure fire safety in residential care premises?

- The Regulatory Reform (Fire Safety) Order 2005

What does 'The Order' require from you?

As the responsible person you must:

- carry out a fire risk assessment of the premises and review it regularly
- tell staff or their representatives about the risks you've identified
- put in place, and maintain, appropriate fire safety measures
- plan for an emergency
- provide staff information, fire safety instruction and training

The Fire Safety Order is a Fire Risk Assessment based approach



FIRE RISK ASSESSMENT

- Do you check it when it arrives?
- How do you check whether it is suitable?
- Do you ensure all action points/significant findings are completed?
- Frequency of review?



PERSON CENTRED RISK ASSESSMENT

- Step 1: The characteristics, behaviours and capabilities of the resident that may lead to fire risk.
- Step 2: Determine the potential causes of fire and the existing measures to prevent fire.
- Step 3: Identify any circumstances that could lead to the rapid development of fire.
- Step 4: Identify existing measures to protect the resident if fire occurs.
- Step 5: Consider capacity of resident to respond appropriately to fire alarm signals or signs of fire.
- Step 6: Consider ability of resident to make their way to safety.
- Step 7: Determine the level of risk to the resident from fire.
- Step 8: Prepare action plan.
- Step 9: Determine period for review of the assessment.



EVACUATION

Evacuation plans must be fully risk assessed, understood & practiced

- Simultaneous or Single Stage
- Phased or Progressive
- Delayed or 'Stay Put'



SIMULTANEOUS EVACUATION

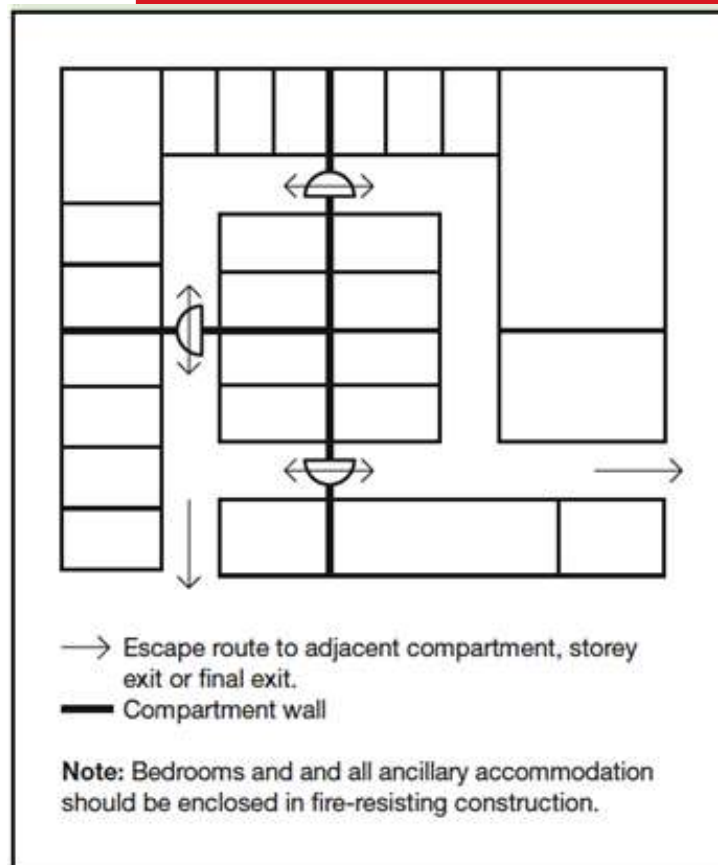
“Everyone reacts to the warning signal given when a fire is discovered, then make their way, by the means of escape, to a place of safety away from the premises”.

May be required due to flooding, gas leaks etc.

Should be able to conduct this without the assistance of the fire service – is this realistic?



PROGRESSIVE HORIZONTAL EVACUATION.



Creating a cleaner, greener, healthier Hertfordshire



STAY PUT/DELAYED EVACUATION

- Compartmentation is adequate
- Fire is detected early
- Fire Service are called and attend as early as possible
- Evacuation is carried out in relation to risk
- Where persons are left in place they should be accompanied – is this possible?



EVACUATION

- How often is this practiced?
- How are evacuations practiced?
- Are lifts used as part of the evacuation?
- Does it include all staff?
- Are nighttime evacuations simulated?
- Are these recorded?
- Are debriefs carried out post evacuation to learn from them?



COMPARTMENTATION

- Defined as:

“A building or part of a building comprising one or more rooms, spaces or storeys constructed to prevent the spread of fire to or from another part of the same building or an adjoining building.”

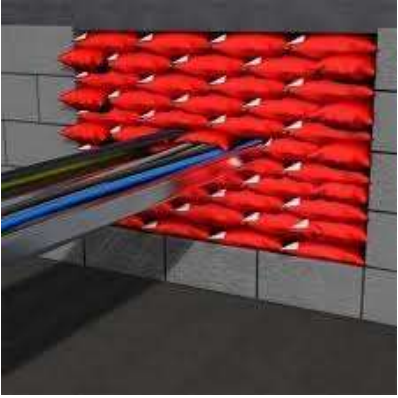
- Fire compartmentation provides occupiers of the building additional time to evacuate before escape routes are potentially compromised by the spread of fire and smoke.



COMPARTMENTATION

- Walls
- Doors
- Floors
- Above the ceiling
- Glazing on escape routes
- External escape routes





FIRE STOPPING: DO NOT ALTER OR CUT THIS FIRE SEAL WITHOUT PERMISSION, DAMAGE MUST BE REPAIRED IMMEDIATELY.	
FIRE STOPPING: DO NOT ALTER OR CUT THIS FIRE SEAL WITHOUT PERMISSION, DAMAGE MUST BE REPAIRED IMMEDIATELY.	
FIRE STOPPING: DO NOT ALTER OR CUT THIS FIRE SEAL WITHOUT PERMISSION, DAMAGE MUST BE REPAIRED IMMEDIATELY.	
FIRE STOPPING: DO NOT ALTER OR CUT THIS FIRE SEAL WITHOUT PERMISSION, DAMAGE MUST BE REPAIRED IMMEDIATELY.	
WARNING - DO NOT REMOVE	
Date Installed: _____	Mr Rating: _____
Location Reference: _____	



Creating a cleaner, greener, healthier Hertfordshire

MANAGING COMPARTMENTATION

- Check contractor work before they leave site
- Works policies
- Take photos



BREAK TIME



STAFFING NUMBERS

- This has a strong link to the type of evacuation your premises adopts and the needs of your residents
- How many staff does your premises require for a safe evacuation?





Guide to safe staffing

A black and white photograph of a woman with glasses and a denim shirt, smiling. In the background, another person is partially visible sitting on a sofa. The photo is framed with a thin gold border.

Part of our
'Good and outstanding care' range



BUSINESS CONTINUITY PLAN

- **Risk Assessment:** Identify potential threats (fire, flood, cyber-attack, pandemic, severe staffing shortages) and assess their likelihood and impact.
- **Emergency Contact List:** A readily available list of staff, emergency services, utility providers, local authorities, and next of kin.
- **Essential Service Continuity:** Procedures for maintaining care, including emergency generators, back-up heating, and contingency staffing plans & emergency accommodation.
- **Documentation Backup:** Plans for when IT systems fail, such as using paper backups for Medication Administration Records (MAR) and care plans.
- **Communication Plan:** Strategies for informing staff, residents, families, and authorities during an incident



EXERCISE INFORMATION

- All residents on the ground floor have dementia or on set dementia
- Occupants of rooms 103, 119, 123 & 132 are all bedbound
- All upper floor residents require assistance to evacuate



CONTACT INFORMATION

Administration.cfs@hertfordshire.gov.uk

01707 292310

For all emails, please put the name and address of your care home so it can be allocated to the correct team.





Creating a cleaner, greener,
healthier Hertfordshire