



Accessing Wheelchair Scales

It is recommended that **ALL** Service Users (SU) have their weight monitored regularly. Routine weighing will increase compliance with CQC Outcome 5 regarding Nutrition. How often depends on each individual's needs; a dietitian or GP can advise if you're unsure.

SU's who cannot stand safely should be weighed using either hoist scales, sitting scales or wheelchair scales. If your unit does not have suitable scales then please consider either purchasing a set of scales or making arrangements to take the SU to a location that has suitable scales.

Hertfordshire Scales Locations

1. Hertfordshire Wheelchair Service

Millbrook Healthcare
Unit J (Swiftfield), City Park
Watchmead
Welwyn Garden City Hertfordshire
AL7 1LT

Tel: 0333 234 0303

hertswcs@millbrookhealthcare.co.uk

No appointment needed. Remember; you will need to know how much the empty wheelchair weighs - remove items from that have been hung on wheelchair (bags, backpacks, blankets, clothing etc.) and leave on all wheelchair attachments including headrest and footplates. Please note there will not be anybody there to help with transfers. Millbrook have confirmed with the dietitian they are happy for people to be weighed. If there are any problems please contact your dietitian.

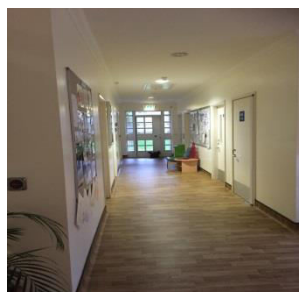
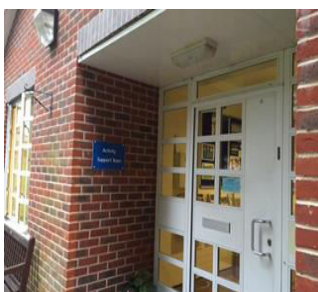
2. Kingsley Green

House 6 Forest Lane
Kingsley Green
Harper Lane
Radlett
WD7 9HQ




Opening Times: Mon-Fri 9:00am-4:30pm

Tel: 01923 633565

No appointment needed. Phone in advance to check the building is open as it is occasionally used for other purposes. The scales are located in the sensory room; with the main entrance behind you, turn left and go to the end of the corridor, last room on the right hand side (see pictures). Instructions on how to use scales are attached to them. Please note there will not be anybody there to help with transfers.



Purchasing scales *(Information correct 14.9.15)*

Type	Cost	Advantage	Disadvantage
Wheelchair scales (Marsden M-610) 	£675 + vat	Suitable to weigh: <ul style="list-style-type: none"> - SU in their own wheelchair (including specialist chairs). - Ambulant SU's who struggle with stand on scales. 	Need to be set up for use each time (Unless kept in an empty/treatment room).
Chair Scales 	£500 – 600 + vat	Suitable to weigh: <ul style="list-style-type: none"> - SU's who can be hoisted onto the chair. - Ambulant SU's who struggle with stand on scales. 	Not suitable for: <ul style="list-style-type: none"> - SU's who are unable to independently support their upper body. - SU who cannot be transferred to the chair scales. - Some bariatric SU's.
Hoist Scales 	£500 – 600 + vat	Suitable to weigh: <ul style="list-style-type: none"> - SU's who are hoisted. 	Not suitable for: <ul style="list-style-type: none"> - SU who cannot tolerate being hoisted. Can be less accurate and difficult to use.

Cost comparison

Purchasing specialist scales has an upfront cost that some care settings may find expensive. Below is the cost of wheelchair scales compared to regularly transporting one SU to a Hertfordshire Scales Location:

	Cost per visit	Cost per year	Cost of scales
Wheelchair taxi.	£50 – 100 per trip	Every 3 months = £100 – 400*	£500 – 675
Additional staff time/costs as taken away from the unit.	Staff costs	Once a month = £600 – 1200*	

* Excluding staffing costs

Therefore, the cost of purchasing specialist scales is less than transporting one SU to a Hertfordshire Scales Location over 6 - 18 months. Sharing with another unit can reduce the cost more.

For more information please contact West Hertfordshire Dietitian 01442 283464 or East & North Hertfordshire Dietitian 01438 792 160.